



# OFFROAD

2020





# WINNING STARTS HERE

At Honda, we don't believe in limits. And neither do our riders. This is why we have developed our range of CRF bikes: to be able to take on the toughest, most challenging courses in the world. Precision engineering, matched with unrivalled reliability, results in more time powering through dirt – each bike is packed full of cutting edge features and proven race winning technology. Combine that with superb agility and light weight, they will keep you one step ahead of the competition – whether you're a seasoned pro or climbing the ladder.

## CONTENTS

CRF450R (UPDATED)	04
CRF450L (UPDATED)	06
CRF250R (UPDATED)	08
CRF250RX (UPDATED)	10
REPLICA EDITIONS (NEW)	12
CRF150RB	14
CRF125F / CRF110F / CRF50F	16
SPECIFICATIONS	18
HONDA EXPERIENCES	21
HONDA TECHNOLOGY	22
DREAMS REALLY DO COME TRUE	23





# ABSOLUTE HOLESHOT

We never rest on laurels. We just gave the CRF450R's engine more power and torque from an HRC-developed cylinder head. And added 3-level HRC Launch Control alongside the 3-Mode EMSB (Engine Mode Select Button). But we're moving our game on. Again.

The CRF450R now has 3-Mode Honda Selectable Torque Control (HSTC). From tight and tricky to wet and muddy, and all points in between HSTC has got you and while it manages rear wheel traction it also maintains all-important throttle feel and power delivery. And if you don't want it, you can turn HSTC off.

The seventh-generation twin-spar aluminium frame locks in lateral and torsional stiffness for turning ability, with increased yaw-angle stiffness for tracking accuracy and the battery box is now sited 28.5 mm lower to improve mass centralisation. Increased low-speed compression damping for the 49 mm Showa USD fork gives better response in the hard-braking zone while the shock has more low-speed compression damping (and less high-speed compression) for control under hard acceleration. New rear brake pads improve power and durability.

It's the start point of the full-factory weapon team HRC rider Tim Gajser won the 2019 MXGP championship on. And it'll help you own the start. The laps. The victory. The winner's laurels. And that's why we don't rest on ours.



## PERFORMANCE

**2.4** BHP MORE POWER **2** Nm MORE TORQUE

19YM action photos

## ENGINE

**3** RIDING MODES

## HSTC

**HONDA SELECTABLE TORQUE CONTROL**

## KEY FEATURES



HRC-LC



SUSDF



ALM-F



EGM



WVD



PLRS



PGM-FI



ELS



Discover more at: [honda.co.uk](https://honda.co.uk)





# DUAL-PURPOSE DREAM MACHINE

It does exist. There is a fully road legal dual-purpose motorcycle that mixes cutting-edge off-road technology with high build quality and reliability. It's called the CRF450L. Developed using the CRF450R as a base it features a punchy 449 cc Unicam® engine, twin-spar aluminium frame, six-speed gearbox, 7.6L titanium fuel tank, 18-inch rear wheel and premium Showa suspension. It also has electric start, full LED lighting and, for 2020, sharp new graphics.

A true trail-to-trail machine, the CRF450L will take you wherever you want to go and bring you back again. It's perfectly balanced off-road, with the engine's smooth torque driving the agile chassis fluidly. And equally at home on-road, linking up the trails or slicing through heavy city traffic.

And while its competition DNA is obvious the CRF450L also hides another important feature; with an oil and filter change every 600 miles it doesn't require a major overhaul until 19,000 miles. Now that is a dual-purpose rider's dream.



## PERFORMANCE

**449** CC  
Unicam®  
ENGINE

## ENGINEERING

**6** SPEED  
TRANSMISSION

## START

**ELECTRIC  
START** WITH LITHIUM BATTERY

19YM action photos

## KEY FEATURES



PGM-FI



SUSDF



ALM-F



EGM



WVD



PLRS



ELS



Discover more at: [honda.co.uk](https://honda.co.uk)



**CRF**  
250R

# CUT LAP TIMES IT'S WHAT WE DO

The 250 MX class moves fast and so do we. The new CRF250R's electric start DOHC engine adds to its muscular bottom-end and top-end hit with 10% more torque between 6-10,000 rpm thanks to revised combustion chamber, cam timing and improved inlet/exhaust efficiency. To utilise the extra mid-range push, and maintain rpm when shifting up, the second and third gear ratios are closer together. HRC Launch Control helps nail the start while the 3-Mode EMSB (Engine Mode Select Button) adjusts power delivery.

The aluminium frame and swingarm are now identical to the current CRF450R and have a carefully tuned rigidity balance between them; combined with increased low-speed compression damping settings for the fully adjustable front and rear Showa suspension the result is improved stability, feel and accuracy while tracking through fast, bumpy turns.

Lighter foot pegs use a 4-web internal structure to clear mud. The front brake calliper has 30 and 27 mm pistons plus low-expansion brake hose for power with feel, while new pad material for the rear brake improves durability. If you want to cut lap times make the new CRF250R your weapon of choice.

It's what it's built for.



**FORK**

**49**<sup>MM</sup>  
SHOWA USD FORK

**ENGINE**

**3**  
RIDING MODES

**START**

**HRC LAUNCH  
CONTROL**

## KEY FEATURES



HRC-LC



SUSDF



EGM



WVD



PGM-FI



PLRS

19YM action photos

Discover more at: [honda.co.uk](http://honda.co.uk)





# MAKE FAST EASY

The CRF250RX is the off-road tool you've always wanted. It's a high-performance trail/enduro machine built to exploit all the advantages a lightweight 250 offers, from manoeuvrability to nimble agility.

With identical 2020 engine and chassis upgrades as the CRF250R motocrosser it's already special. But it also has Showa suspension re-set for use away from the MX track, 18-inch rear wheel and larger fuel tank. And a sidestand, too. A small, but useful detail.

So, when the going gets really tough, tight or technical and where bigger bikes could wear you out, the CRF250RX shines. It's a motorcycle that keeps you moving forward, no matter what challenges you face on your way.

The CRF250RX makes fast, easy.



#### PERFORMANCE

**8.5** LITRES  
FUEL TANK

#### ENGINE

**3** RIDING MODES

#### START

**HRC LAUNCH  
CONTROL**

19YM action photos

#### KEY FEATURES



HRC-LC



SUSDF



EGM



WVD



PGM-FI



PLRS



Discover more at: [honda.co.uk](https://honda.co.uk)




# REPLICA EDITIONS


We have released a pair of very limited 'Race Replica' CRFs to celebrate our continued success in all motocross disciplines.

Available as a CRF450R Roczen or CRF250R Geico, the 'Factory Edition' bikes feature a host of top specification upgrade items.


Both Replica Editions feature a Blackbird Racing seatcover, an anodised accessory kit, full race plastics with competition graphics, and are fitted with a lightweight Yoshimura exhaust system.




HRC-LC




SUSDF




PGM-FI



EGM



WVD



PLRS

Replica Editions come with the Original Equipment Manufacturer parts as spares.



## GEICO HONDA CRF250R ENHANCED FEATURES

- + Polisport panels with Geico Honda AMA graphics
- + Yoshimura exhaust system
- + Blackbird Racing seat cover
- + Talon wheels - Black Rims / Red Hubs
- + Talon Rear Sprocket
- + RK Chain
- + Bridgestone Tyres
- + Anodised accessory kit, consisting of:
  - Brake Hose Clamps
  - Engine Plugs
  - Master Cylinder Covers
  - Valve Caps & Valve Cap Screws
  - Rear Axle Blocks & Adjusters
  - Steering Stem Nuts

Images shown are for illustrative purposes only



## KEN ROCZEN CRF450R ENHANCED FEATURES

- + Polisport panels with Ken Roczen AMA graphics
- + Yoshimura exhaust system
- + Blackbird Racing seat cover
- + Talon wheels - Black Rims / Red Hubs
- + Talon Rear Sprocket
- + RK Chain
- + Bridgestone Tyres
- + Anodised accessory kit, consisting of:
  - Brake Hose Clamps
  - Engine Plugs
  - Master Cylinder Covers
  - Valve Caps & Valve Cap Screws
  - Rear Axle Blocks & Adjusters
  - Steering Stem Nuts

Discover more at: [honda.co.uk](https://honda.co.uk)





CRF  
150RB

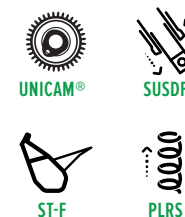
# POCKET ROCKET

Wrapped in the familiar CRF-family-inspired graphics, the CRF150RB is packed full of high-performance technology and is the best place for future champions to hone their skills. It's armed with a compact but powerful 4-stroke Unicam® engine that weighs under 20kg, ensuring a lightweight ride that's perfect for first-timers. It's smooth and easy to control, with an accurate throttle response and wide rev-range that's certain to leave other riders in your dust.

It handles too. The strong, slim and lightweight steel tube frame mounts a low-friction, long-travel, fully-adjustable inverted front fork, giving you the confidence to take on even the toughest track conditions. With performance DNA this strong, you'll be winning races in no time.



## KEY FEATURES



### SUSPENSION

**37** MM SHOWA  
USD FORK

### KERB WEIGHT

**84.4** KG

### FRONT WHEEL

**19** INCH

Discover more at: [honda.co.uk](http://honda.co.uk)



**CRF**  
125F 110F 50F

# FUTURE CHAMPIONS START HERE

Inspired by the great riders of the GP circuit, every Honda CRF F bike is designed to be the perfect fit for aspiring riders and racers alike.

Downsized grips and a simple-to-use, semi-automatic gearbox in the CRF50F and full 5-speed boxes in the CRF110F and CRF125F allow young riders to take full control.

Proven and reliable, the 4-stroke engines on all three CRF Fs provide smooth, safe power, while the rugged chassis and suspension can easily handle the roughest terrain. And with the graphics and styling coming direct from the CRF race bikes, you'll look fast wherever you choose to ride.



SUSPENSION

**31** MM  
INVERTED FORK

KERB WEIGHT

**88** KG

FRONT WHEEL

**19** INCH



SUSPENSION

**31** MM  
INVERTED FORK

KERB WEIGHT

**74** KG

FRONT WHEEL

**14** INCH



SUSPENSION

**21.7** MM  
INVERTED FORK

KERB WEIGHT

**50** KG

WHEELS

**10** INCH

Discover more at: [honda.co.uk](http://honda.co.uk)



CRF450R

ENGINE	
Engine Type	Liquid-cooled 4-stroke single cylinder Unicam®
Engine Displacement	449.7 cm³
Compression Ratio	13.5 : 1
Bore × Stroke (mm)	96.0 × 62.1
Starter	Electric

CHASSIS, DIMENSIONS & WEIGHT

Caster Angle	27.4°
Dimensions (L×W×H) (mm)	2,183 × 827 × 1,260
Frame type	Aluminium twin tube
Fuel Tank Capacity (Litres)	6.3
Ground Clearance (mm)	328
Kerb Weight (kg)	112
Seat Height (mm)	960

WHEELS, SUSPENSION & BRAKES

Brakes Front	260 mm hydraulic wavy disc
Brakes Rear	240 mm hydraulic wavy disc
Suspension Front	Showa 49 mm USD fork
Suspension Rear	Showa monoshock using Honda Pro-Link®
Tyres Front	80/100-21 51M Dunlop MX3SF
Tyres Rear	120/80-19 63M Dunlop MX3S



CRF450L

Liquid-cooled 4-stroke single cylinder Unicam®
449.7 cm³
12.0:1
96.0 × 62.1
Electric

28.5°
2,280 × 825 × 1,260
Aluminium twin tube
7.6
315
130.8
940

260 mm hydraulic wavy disc
240 mm hydraulic wavy disc
Showa 49 mm USD steel-sprung fork
Showa monoshock using Honda Pro-Link®
80/100-21 Dunlop MX3S
120/80-18 Dunlop MX3S



CRF250R

Liquid-cooled 4-stroke single DOHC
249.4 cm³
13.9 : 1
79 × 50.9
Electric

27.5°
2,181 × 827 × 1,260
Aluminium twin tube
6.3
327
107.8
957

260 mm hydraulic wavy disc
240 mm hydraulic wavy disc
Showa 49 mm coil-sprung fork
Showa monoshock using Honda Pro-Link®
80/100-21 Dunlop MX3S
100/90-19 Dunlop MX3S



CRF250RX

Liquid-cooled 4-stroke single DOHC
249.4 cm³
13.9 : 1
79 × 50.9
Electric

27.5°
2,181 × 827 × 1,260
Aluminium twin tube
8.5
327
111
957

260 mm hydraulic wavy disc
240 mm hydraulic wavy disc
Showa 49 mm coil-sprung fork
Showa monoshock using Honda Pro-Link®
80/100-21 Dunlop MX3S
100/90-19 Dunlop MX3S



CRF150RB

Liquid-cooled 4-stroke single cylinder Unicam®
149.7 cm³
11.7 : 1
66.0 × 43.8
Kick

27° 48'
1,900 × 770 × 1,171
Semi-double; steel tube
4.3
336
84.4
866

220 mm × 3 mm hydraulic disc
190 mm × 3.5 mm hydraulic disc
Showa 37 mm Inverted fork, 274 mm travel
Pro-Link with single Showa damper, 282 mm axle travel
70/100-19 42M
90/100-16 52M





SPECIFICATIONS

ENGINE

Engine Type	Air-cooled 4-stroke SOHC single
Engine Displacement	124.9 cm³
Compression Ratio	9.5 : 1
Bore x Stroke (mm)	52.4 × 57.9
Starter	Electric / Kick

CHASSIS, DIMENSIONS & WEIGHT

Caster Angle	27° 30’
Dimensions (L×W×H) (mm)	1,770 × 740 × 1,010
Frame type	Diamond; steel
Fuel Tank Capacity (Litres)	4.3
Ground Clearance (mm)	264
Kerb Weight (kg)	88
Seat Height (mm)	785

WHEELS, SUSPENSION & BRAKES

Brakes Front	220 mm hydraulic disk
Brakes Rear	95 mm leading/trailing drum
Suspension Front	31 mm telescopic fork, 150 mm travel
Suspension Rear	Single shock using Honda Pro-Link system, 150 mm axle travel
Tyres Front	70/100–19M/C 40M
Tyres Rear	90/100–16M/C 49M



CRF110F

Engine Type	Air-cooled 4-stroke SOHC single
Engine Displacement	109 cm³
Compression Ratio	9 : 1
Bore x Stroke (mm)	50.0 × 55.6
Starter	Electric / Kick

Caster Angle	24° 25’
Dimensions (L×W×H) (mm)	1,560 × 686 × 912
Frame type	Steel backbone
Fuel Tank Capacity (Litres)	5
Ground Clearance (mm)	175
Kerb Weight (kg)	74
Seat Height (mm)	667

Brakes Front	95 mm drum
Brakes Rear	95 mm drum
Suspension Front	31 mm fork, 99 mm travel
Suspension Rear	Monoshock, 86 mm axle travel
Tyres Front	70/100-14
Tyres Rear	80/100-12



CRF50F

Engine Type	Air-cooled 4-stroke 2-valve SOHC single
Engine Displacement	49 cm³
Compression Ratio	10 : 1
Bore x Stroke (mm)	39.0 × 41.4
Starter	Kick

Caster Angle	25°
Dimensions (L×W×H) (mm)	1,302 × 581 × 774
Frame type	Mono-Backbone; steel tube
Fuel Tank Capacity (Litres)	2.6
Ground Clearance (mm)	146
Kerb Weight (kg)	50
Seat Height (mm)	548

Brakes Front	80 mm leading / trailing drum
Brakes Rear	80 mm leading / trailing drum
Suspension Front	21.7 mm inverted telescopic fork, 87 mm travel
Suspension Rear	Monoshock with cantilever-type swingarm, 70 mm axle travel
Tyres Front	2.50 10 (33)
Tyres Rear	2.50 10 (33)



ADRENALINE  
TEST RIDE

Leave behind the daily grind and experience more from your riding.

Our range of Riding Centres offer expert tuition from experienced Honda instructors on Super Sport, Adventure, Trials and Off Road bikes as well as the chance to test ride bikes from across the Honda range.

For more info go to:  
[honda.co.uk/motorcycles/ride-with-us](https://honda.co.uk/motorcycles/ride-with-us)





# HONDA TECHNOLOGY

Honda has developed and applied many innovative technologies for its motorcycling range, designed to have the greatest possible benefit for you and the world around you.



## HONDA SELECTABLE TORQUE CONTROL

If the Honda Selectable Torque Control (HSTC) system senses an imminent loss of rear wheel traction it reduces torque to allow the tyre to grip.



## HRC LAUNCH CONTROL

3 level of special ECU program that allows to optimise start performance. Select the desired mode, hold the throttle open, release the clutch, and the bike will do the rest.



## ALUMINIUM FRAME

One-third the weight of steel, the aluminium frame is stiffer and lighter to make sure every second counts.



## PROGRAMMED FUEL INJECTION

Map-type computerised system maintains strong power and responsive performance in all conditions.



## WAVY DISCS

Providing better heat dissipation and improved braking performance.



## HONDA PRO-LINK® REAR SUSPENSION

Monoshock rear suspension utilises a triangular linkage system to progressively increase damping force through range of rear swingarm movement.



## SHOWA USD FORK

Larger diameter tubes above and smaller tubes at the bottom increase surface area providing more rigidity to deal with off road terrain.



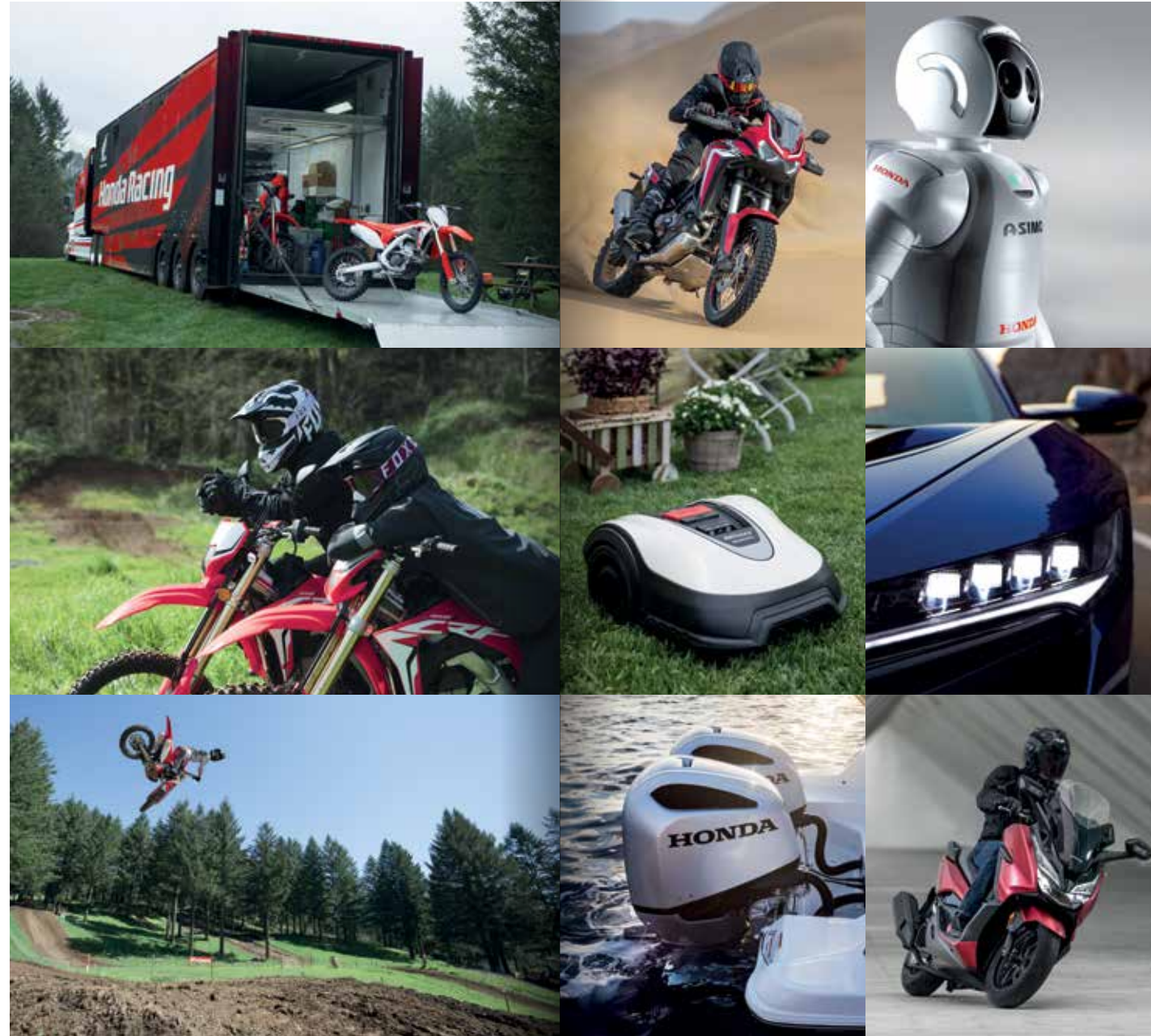
## ENGINE MODE SELECT BUTTON

Giving a choice of 3 riding modes; Mode 1 delivers standard ECU maps, Mode 2 provides smoother throttle control and Mode 3 returns a more aggressive power delivery.



## ELECTRIC START

Instead of kickstarting the bike electric start offers a simple more convenient way to start the engine.



**DREAMS  
REALLY DO  
COME TRUE**

Soichiro Honda said,

*‘We only have one future, and it will be made of our dreams, if we have the courage to challenge convention.’*

Honda's philosophy in dreaming of a better world for people catalysed the invention of the ASIMO, HondaJet, NSX and the legendary Africa Twin. Dreams can be powerful, they push you to achieve more, to explore new ideas, new technologies and uncover new ways of solving problems. It takes independent thinking and audacity to pursue dreams. It also takes passion and innovation to never allow the dream to die and to shape them into a reality for the modern-day world.





The specific details of this brochure do not apply to any particular product supplied or offered for sale. Manufacturers reserve the right to vary specifications, including colours, with or without notice at such times in such manner as deemed appropriate. Major as well as minor changes may be involved. Every effort, however, is made to ensure the accuracy of the particulars contained in this brochure. Consult your Dealer for details regarding the specifications of any featured product. This publication shall not constitute - under any circumstances whatsoever - an offer by the Company to any individual. All sales are made by the Distributor or Dealer subject to and with the benefit of the standard Conditions of Sale and Warranty provided by the Distributor or Dealer, copies of which may be obtained upon request. While efforts are made to ensure specification accuracy, brochures are prepared and printed several months in advance of distribution and consequently cannot always immediately reflect either changes in specification or in some isolated cases the provision of a particular feature. Customers are always advised to discuss specific details with the supplying Dealer, especially if a selection is dependent upon one of the features advertised. Please contact your local dealer for information and specifications. Please note that the fuel consumption figures provided are results obtained by Honda under standardised testing conditions prescribed by WMTC. Tests are conducted on a rolling road using a standard version of the vehicle with only one rider and no additional optional equipment. Actual fuel consumption may vary depending on how you ride, how you maintain your vehicle, weather, road conditions, tyre pressure, installation of accessories, cargo, rider and passenger weight, and other factors. You accept that if you do go ahead and make a purchase or enter into any kind of transaction, whether for payment or not, you did so entirely in reliance on your own skill and judgement and not on that of anyone else.

**RIDE WITH STYLE** Read the owner's manual thoroughly. Get to know your machine and its capabilities. Concentration assists anticipation. Observe other road users' movements. Brake in plenty of time. Always wear a helmet and quality kit, ride fit and NEVER after drinking alcohol. Good roadcraft and courtesy identify the skilled and stylish rider. Honda endorse the law that all helmet visors must comply with BS 4110. Visors that transmit less than 50% of visible light cannot legally be used on the road.

### **Honda (UK) - Motorcycles**

Cain Road, Bracknell, Berkshire, RG12 1HL England

[honda.co.uk](http://honda.co.uk)



This brochure is printed on Forestry Stewardship Council certified paper which has been produced at a mill and printed by a printer that has been certified to the ISO 14001 environmental standard using vegetable oil based inks and aqueous based coatings. It can be disposed of by recycling, incineration for recovery or is biodegradable.



Please don't bin me.  
Pass me on to a  
friend or recycle me.



**BLUE SKIES FOR  
OUR CHILDREN**